

ShinewayTech®

CWDM / DWDM / PON 3-in-1 OTDR



Hand-held High Performance OTDR

MTP-200-T100

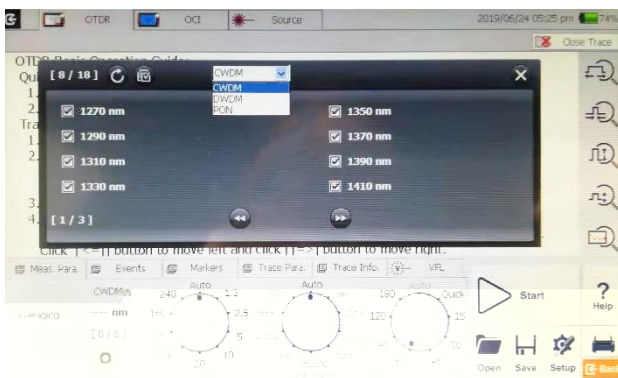
Series

Multi-Function and High Performance OTDR Testing

- Unique combination of 96 DWDM OTDR + 18 -2.1
- Dynamic range up to 38dB (DWDM/PON OTDR), 36dB for CWDM OTDR
- Short zone: EDZ 1m, ADZ 4m
- Tunable laser source with 50/100GHz spacing
- Auto/manual test and analysis
- Multi-wavelength testing
- Visible laser source function
- Fault locating, fiber length/loss/return loss measurement, connector/ splice/ splitter/ macro bend/fiber-end detection
- GR-196-CORE (.SOR) file format
- SOR and JPG file format
- Flexible file naming
- LinkImage smart graphic analysis

Optimized Platform Performance

- Lightweight, 2.1kg
- 7 inch touch screen
- Windows user interface for easy operation
- Damp-dust-shock proof
- 10 hours continuous operation
- Supports WiFi / Bluetooth / GPS
- Direct printing function(compatible with PCL printers)
- Remote/local control by PC



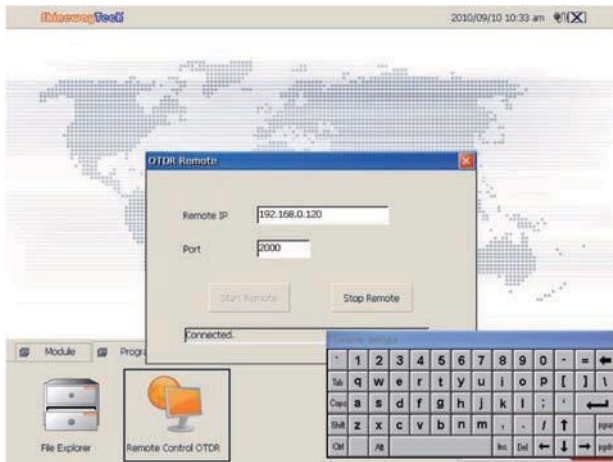
MTP Suite PC Software

- Multi traces analysis
- Single/multi traces printing in one report
- Batch editing and printing
- Bidirectional traces analysis
- CSV report formats
- Remote control function



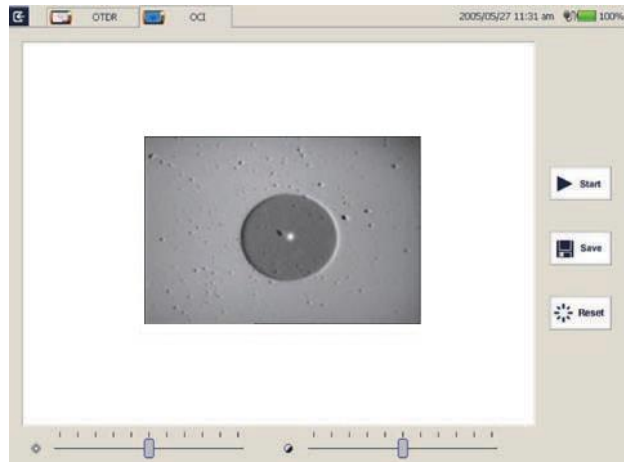
Network Remote Control Module (Optional)

Convenient networking
Remote control instrument operation



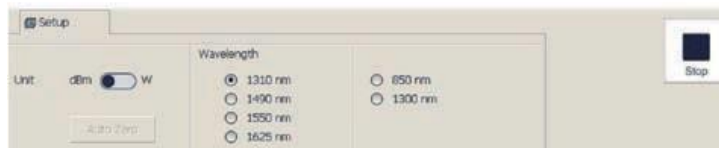
Optical Connector Inspector Module (Optional)

Focusing knob for fast focus
Eye-safe and clear video viewing
Interchangeable connector tips



Optical Power Meter Module (Optional)

Multi-wavelength Calibration
High Precision
Convenient Operation



Applications

DWDM network fiber characterization
DWDM live testing
Verification of ROADM channel routing
Test through OADM and MUX/DMUX

MTP-200 Series	
Display	7 inch TFT Touch Screen (800x480)
Connectivity	USBx2; 10/100Mbit/s RJ-45x1 2GB
Power Supply	Rechargeable Li-Ion Battery/AC Adapter
Battery Life	10 hours continuous operation
Working Temp.	-20°C - 50°C
Storage Temp.	-40°C - 60°C
Humidity	0 - 95% (Non-Condensing)
Weight	2.1kg
Dimensions (LxWxH)	290x175x75mm

