

ShinewayTech®

Up to 18 CWDM wavelengths in one OTDR



Hand-held High Performance OTDR

MTP-200-CWDM Series

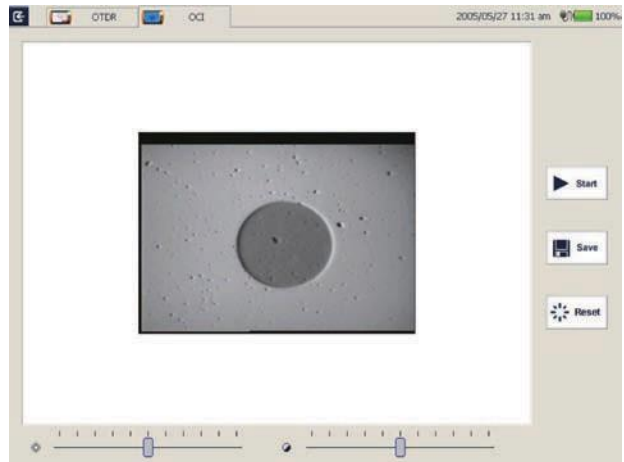
Network Remote Control Module (optional)

Convenient networking
Remote control instrument operation



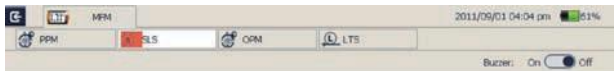
Optical Connector Inspector Module (optional)

Focusing knob for fast focus
Eye-safe and clear video viewing
Interchangeable connector tips



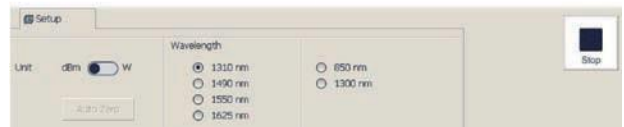
Stabilized Laser Source Module (optional)

Wavelength same as the OTDR
High precision and easy operation



Optical Power Meter Module (optional)

Multi-wavelength Calibration
High Precision
Convenient Operation



Applications

Installation Stage
Service Deployment
Maintenance Stage

MTP-200 Series

Display	7 inch TFT Touch Screen (800x480)
Connectivity	USBx2; 10/100Mbit/s RJ-45x1
Memory	2GB
Power Supply	Rechargeable Li-Ion Battery/AC Adapter
Battery Life	10 hours continuous operation
Working Temp.	

PM100 Normal Power Meter Module (Optional)	
Calibrated Wavelength	850nm, 1300nm, 1310nm, 1490nm, 1550nm, 1625nm, 1650nm
Measurement Range	-70dBm - +6dBm (-60dBm - +6dBm @ 850nm)
Detector Type	InGaAs
Display Resolution	0.01dB
Accuracy	$\pm 5\% \pm 0.01\text{nW}$ ($\pm 0.5\text{dB}$ @850nm)

*Specifications subject to change without notice

Notes

- (1) Wavelength is open for customization
- (2) Dynamic range measurement at 20 μ s pulse width and 180s averaging time;
- (3) Dead Zone measurement at 0.6Km and reflection <-45dB; EDZ measurement at 5ns, ADZ measurement at 10ns.

Order Information:

Standard Package

MTP-200 Host, Lithium Battery, CD, Software, Data Cable, Carrying Case, Warranty card, Calibration Certificate

Optional Module:

LS100: Stabilized Laser Source Module (as OTDR)

PM100: Optical Power Meter Module

MCI100: Optical Connector Inspector Module

RC100: Remote control Module

LM100: Link Image Module

